

2024 annual report to the Community

# Jean Horan Kindergarten



Jean Horan Kindergarten number: 5621

Partnership: West Torrens

Preschool director:

Michelle Highfold



Government of South Australia  
Department for Education

Date of endorsement:

09/02/2025

# Context Statement

Information about Jean Horan Kindergarten is available on the centres website, as well as the Australian Children's Education and Care Quality Authority (ACECQA) website.

Jean Horan Kindergarten (JHK) established in 1953 is a Department for Education (DfE) Preschool situated in suburban Flinders Park, SA.

JHK is a diverse social and multicultural community with children attending sessions daily in two groups. Our children and families represent 'Cultural and Linguistically Diverse' (CALD) backgrounds from over 15 countries (51% of our enrolments). Our set groups offer support for strong relationships with educators, peers and a safe consistent learning environment. Many of our children attend additional early year's services including child-care and/or are cared for by extended family members. Up to 15 families attended our weekly 'Friday Family Playgroup'.

JHK is staffed by fully qualified ECE Teachers and Early Childhood Workers (ECW's) working on a 1:11 adult to child ratio. Bilingual ECW's and Support ECW's provide intervention and stretch programs. We benefit working with the assistance of our DfE LET and Support Team - Special Educators, Occupational Therapist, Speech Pathologists and Psychologists.

We value our JHK experienced and dedicated Staff Team and pride ourselves on the enduring relationships that we have made with local children, families, and the local community. We participate with the DfE 'Flinders Park 2' Portfolio, (particularly those sites in our 'West Torrens' Partnership which includes 5 other Preschools, 8 Primary, 2 Secondary and 4 Specialist schools) to create strong connections within the local education network.

Advocating for children and enhancing their learning and development is the core of what we do.

We see each child as capable, confident, and unique with their own interests, perceptions, and strengths. Our purpose is to engage children in inquiry about themselves and their world through authentic and stimulating learning experiences every day. Educators design a meaningful and relevant play-based curriculum using the Australian 'Early Years Learning Framework V2' and the DfE 'Indicators of Numeracy and Literacy'.

We truly believe in our curriculum vision of providing children with a confident sense of BELONGING, BEING, AND BECOMING.

## Governing Council Report

The 2024 year has been a period of growth and development for Jean Horan Kindergarten, both in terms of educational outcomes and community engagement. As educators and parents alike, our primary focus has been to continue fostering a nurturing environment where children can develop their social, emotional, cultural and cognitive skills.

This year we had a Governing Council consisting of 6 parents, in addition to our teacher representative, meeting once a month to provide input and feedback on decisions relating to the site program and facilities alike.

We also welcomed Michelle Highfold as our new Director here at Jean Horan, joining our wonderful team of educators in both the Magpie and Lorikeet classes.

### Some key highlights of the year I would like to mention include:

- Jean Horan Introductory Family Picnic and AGM
- Local fundraising activities including:
  - The annual Read-a-thon
  - Obstacle-a-thonWhich helped raise funds for exciting new reading resources and outdoor play equipment
- Several Incursions by our local Emergency Services including Police, Ambulance and Fire Departments
- Little Sprouts Excursion at the Adelaide Zoo
- 2024 Paris Olympics activities
- And finally, what is a school year without the annual Book Week event

And now, as we look to the future, Jean Horan Kindergarten has secured solid enrolment numbers for 2025, and we hope the community can continue to spread the word to loved ones and encourage them to visit Jean Horan as a potential kindy for their children. We look forward to seeing upgrades to the classroom flooring, and general site facilities, which will ensure a safe environment

for future generations of children to enjoy.

We would like to thank all members of our kindergarten community for their ongoing support and look forward to another successful year ahead. And for the graduating class of 2024 – we wish you a lifelong journey of learning, curiosity and love.

And a final BIG thank you to the wonderful team here at Jean Horan Kindergarten for 2024, who make this place what it is:

Michelle, Pauline, Maddie, Sia, Poonam & Ania, and our Administration and Finance team of Linda and Jodie 😊

## Preschool Attendance

	Term 1	Term 2	Term 3	Term 4
2021 centre	85.7%	85%	86.6%	87.4%
2022 centre	76.4%	81.2%	70.2%	74.1%
2023 centre	83%	87.8%	80.6%	74.8%
2024 centre	85.7%		79.4%	

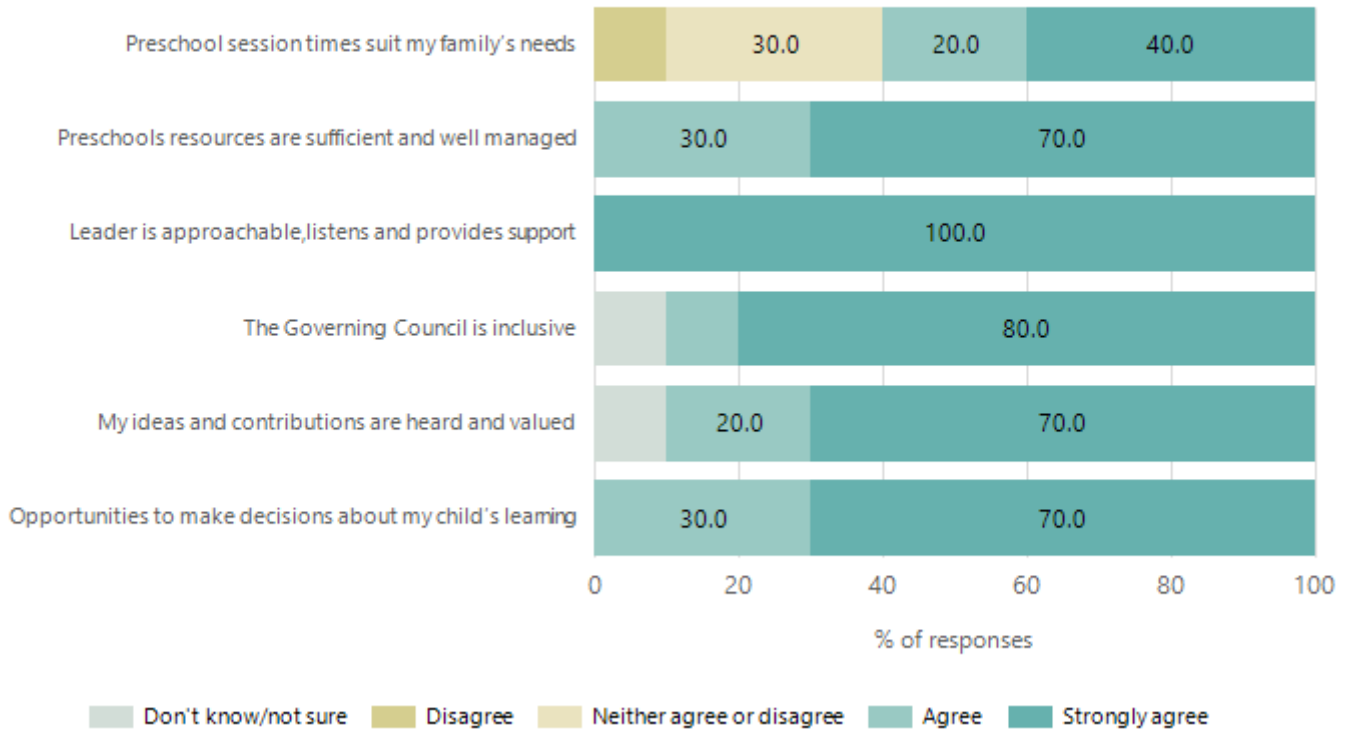
Based on attendances recorded in the two-week reference period each term. Data for eligible enrolments as described in the department's Enrolment policy. Attendance rates may differ to previous reporting with the transfer from calculations based on deemed attendance to actual attendance using booked hours divided by attended hours. Data Source: Department for Education Attendance Data, Semester 1 Report 2024. A blank cell indicates there were no students enrolled.

## Attendance Comment

In South Australia, preschool attendance is not compulsory, but it is strongly encouraged. Preschool gives children the best opportunity to develop skills, which prepare them for school. These benefits include establishing positive routines and habits, friendships and connections as well as developing communication, problem-solving and creative skills. All children are entitled to access a preschool program over 4 terms the year before they start school.

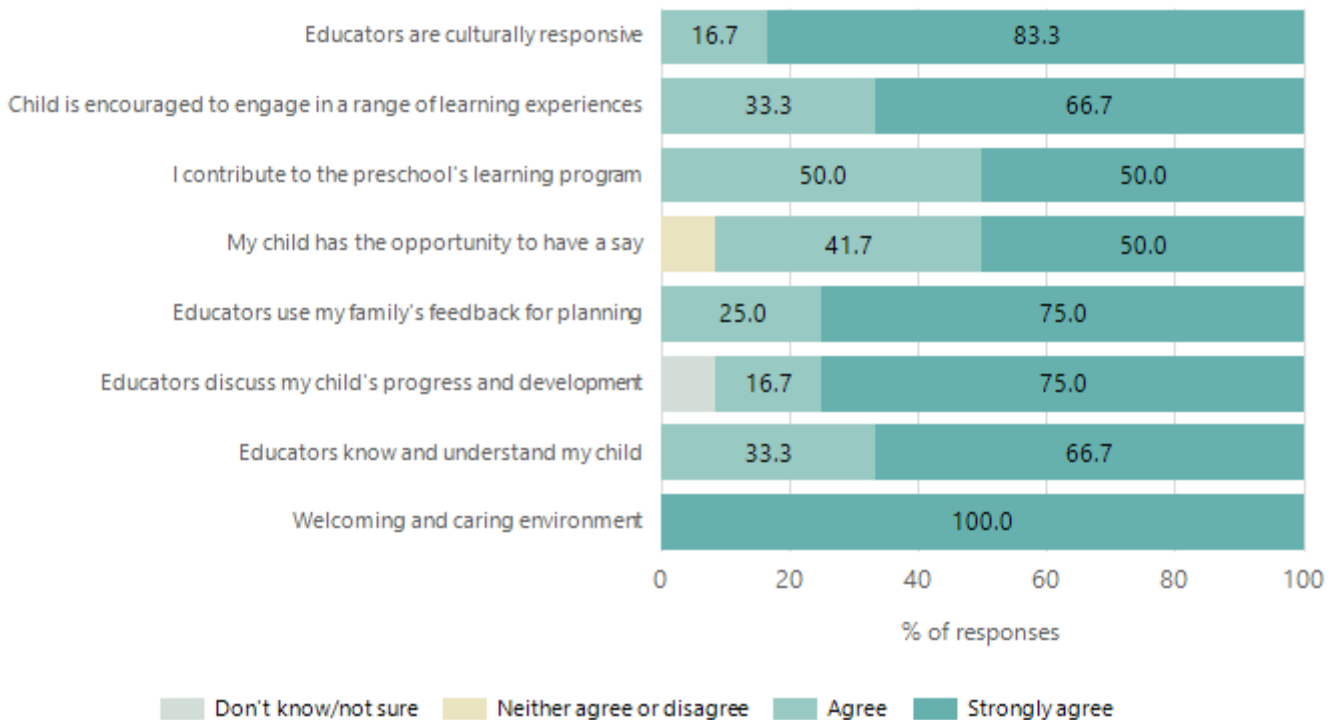
# Preschool Family Opinion Survey

## Governance, Leadership and Management



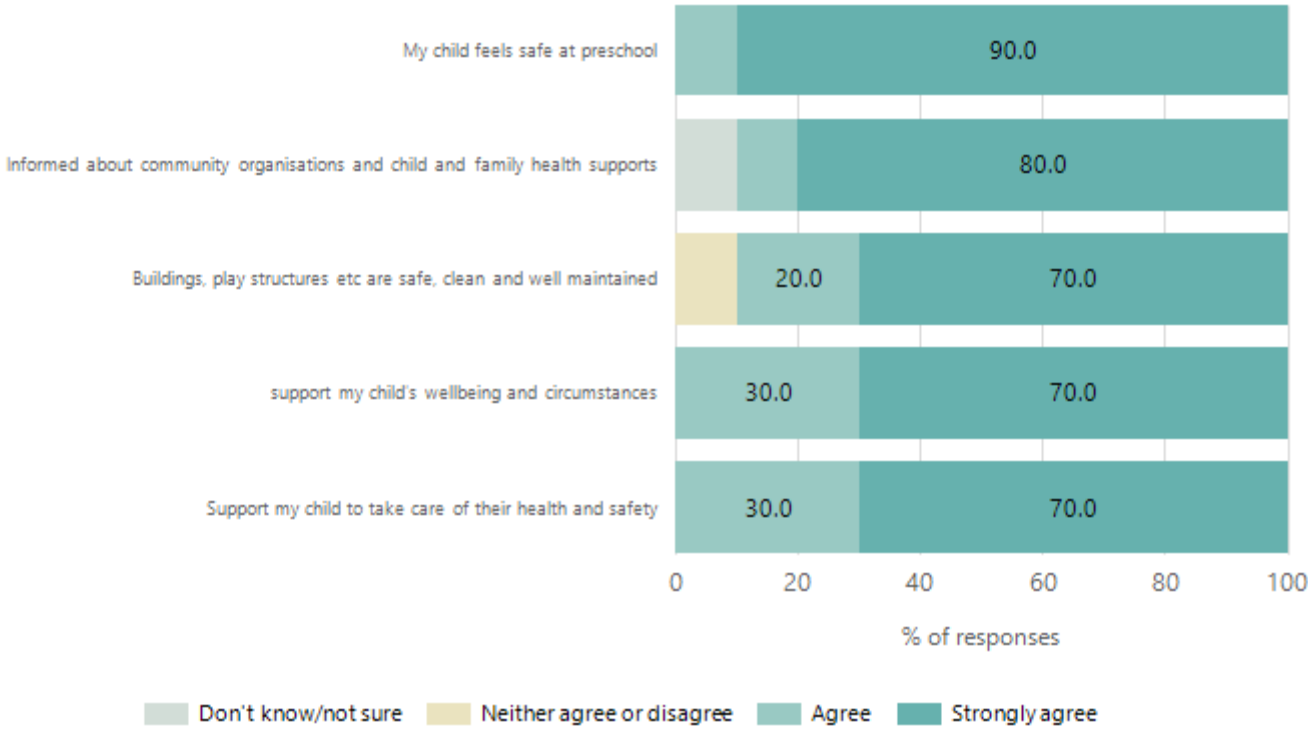
Data Source: 2024 Department for Education Preschool Family Opinions Survey, Term 3 2024.

## Quality of Teaching and Learning



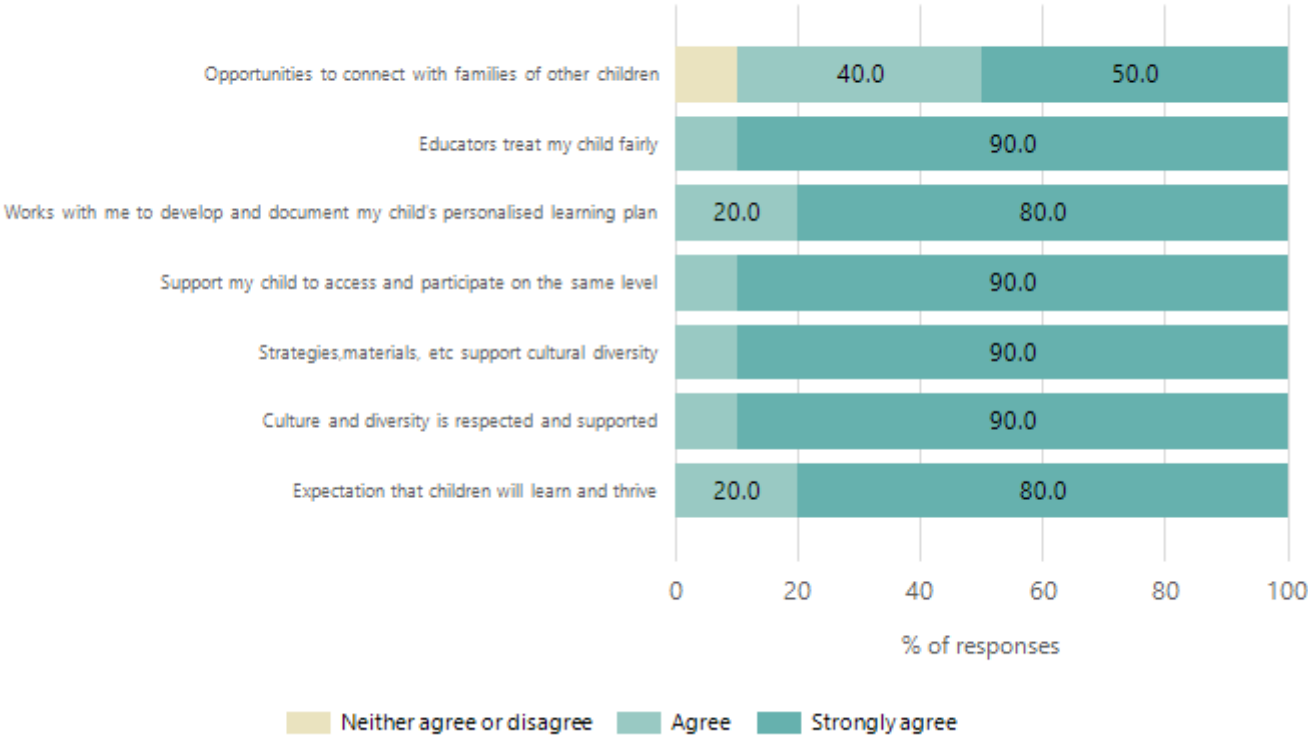
Data Source: 2024 Department for Education Preschool Family Opinions Survey, Term 3 2024.

# Safety, Health and Wellbeing



Data Source: 2024 Department for Education Preschool Family Opinions Survey, Term 3 2024.

# Support and Inclusion



Data Source: 2024 Department for Education Preschool Family Opinions Survey, Term 3 2024.

## Destination Schools

Feeder Schools (Site number - Name)	2022	2023	2024
0135 - Flinders Park Primary School	28.6%	36.1%	13.9%
0911 - Lockleys North Primary School		3.3%	
0996 - Kidman Park Primary School	4.1%	4.9%	4.2%
6015 - Saint Michael's College Junior School		9.8%	12.5%
8280 - Nazareth Catholic College Findon Primary Campus	10.2%		4.2%
8370 - Star of the Sea School	4.1%		
9033 - Nazareth Catholic College		3.3%	
9040 - St Francis School	6.1%	6.6%	13.9%
9089 - Whitefriars School			4.2%
9999 - Unknown	34.7%	26.2%	34.7%

Note: The data is collected in term 3. It does not reflect actual schools enrolled in by existing preschool children. A blank cell indicates there was no data for students enrolled.

Data Source: Department for Education Destination Data Report, 2024.

# Highest Qualifications held by the teaching workforce and workforce composition

All teachers at this school are qualified and registered with the SA Teachers Registration Board.

Qualification Level	Number of Qualifications
Bachelor's degrees or Diplomas	3
Postgraduate Qualifications	1

Data Source: Data extracted from Mandatory Workforce Information Collections as on the last pay date of June 2024. As self-reported by staff in the system.

Please note: Data includes staff who are Actively employed and on extended paid leave. Please note only the highest qualification of the Teaching staff is reported. Excludes any number of other certifications earned.

## Workforce composition including indigenous staff

	Teaching Staff		Non-Teaching Staff	
	Indigenous	Non-Indigenous	Indigenous	Non-Indigenous
Full-Time Equivalents	0.0	2.5	0.0	1.0
Persons	0.0	3.0	0.0	1.0

Data Source: Data extracted from Mandatory Workforce Information Collection as on the last pay date of June 2024.

Please note: Data includes staff who are actively employed and on extended paid leave. "Indigenous category" is self-reported by staff in the system.

## Financial Statement

Funding Source	Amount
Grants: State	\$540,331.85
Grants: Commonwealth	0
Parent Contributions	\$37,640.00
Fund Raising	\$1944.80
Other	\$37.53

Data Source: School supplied data.